

Upper Snake Region Fisheries Surveys



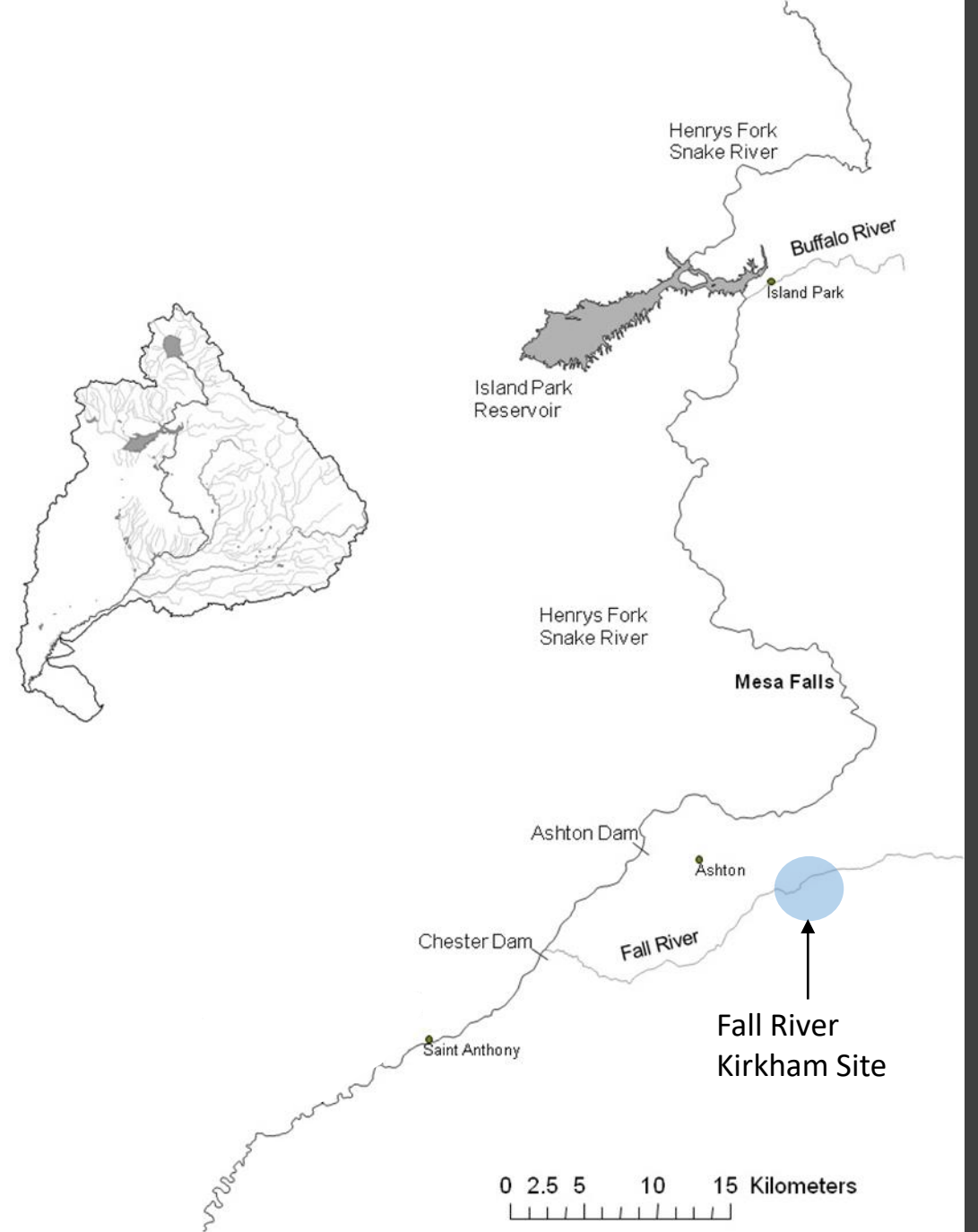
Brett High
Regional Fisheries
Manager

Fall River



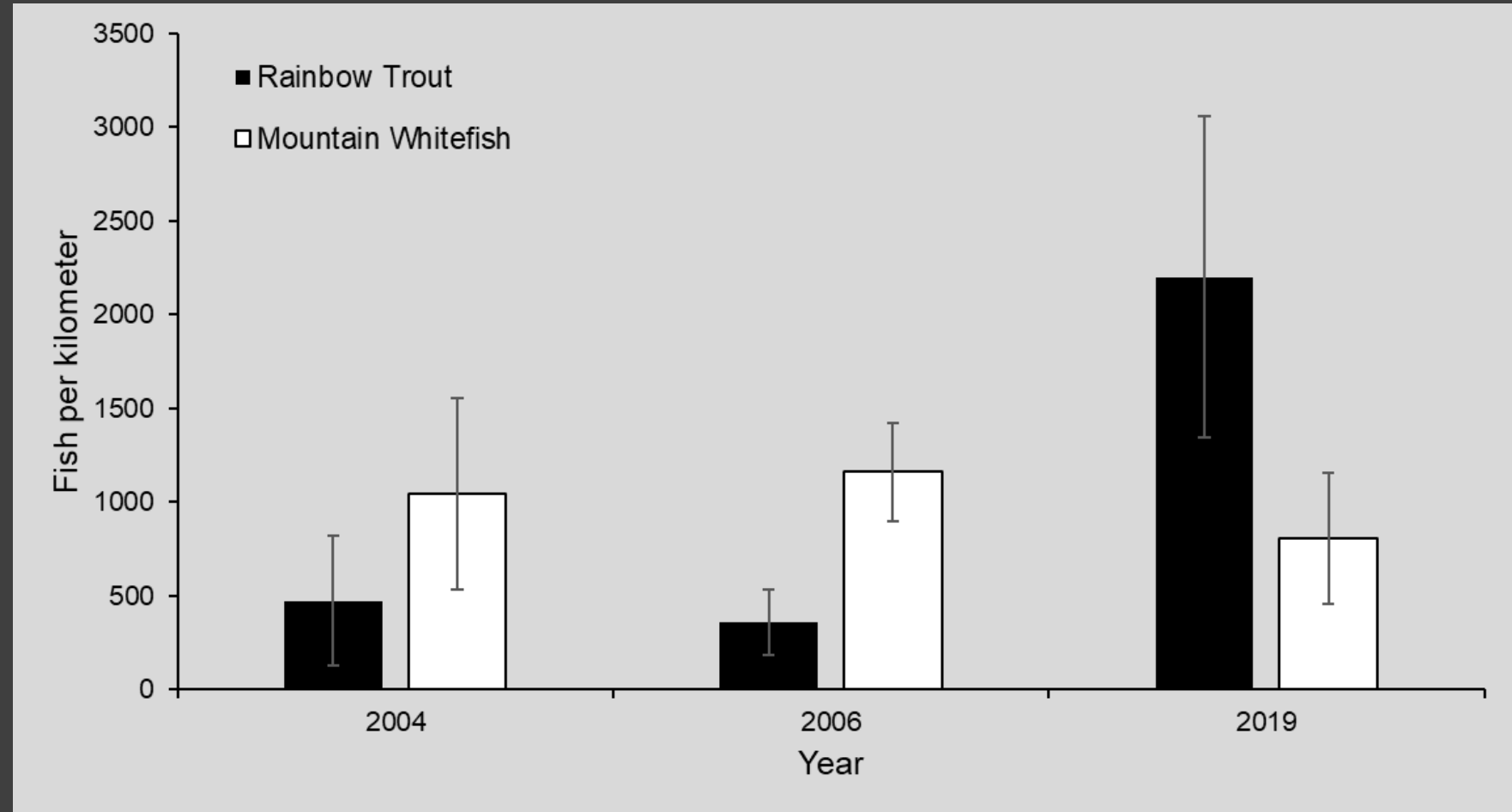
Area Map

- Fall River – Kirkham Bridge Site

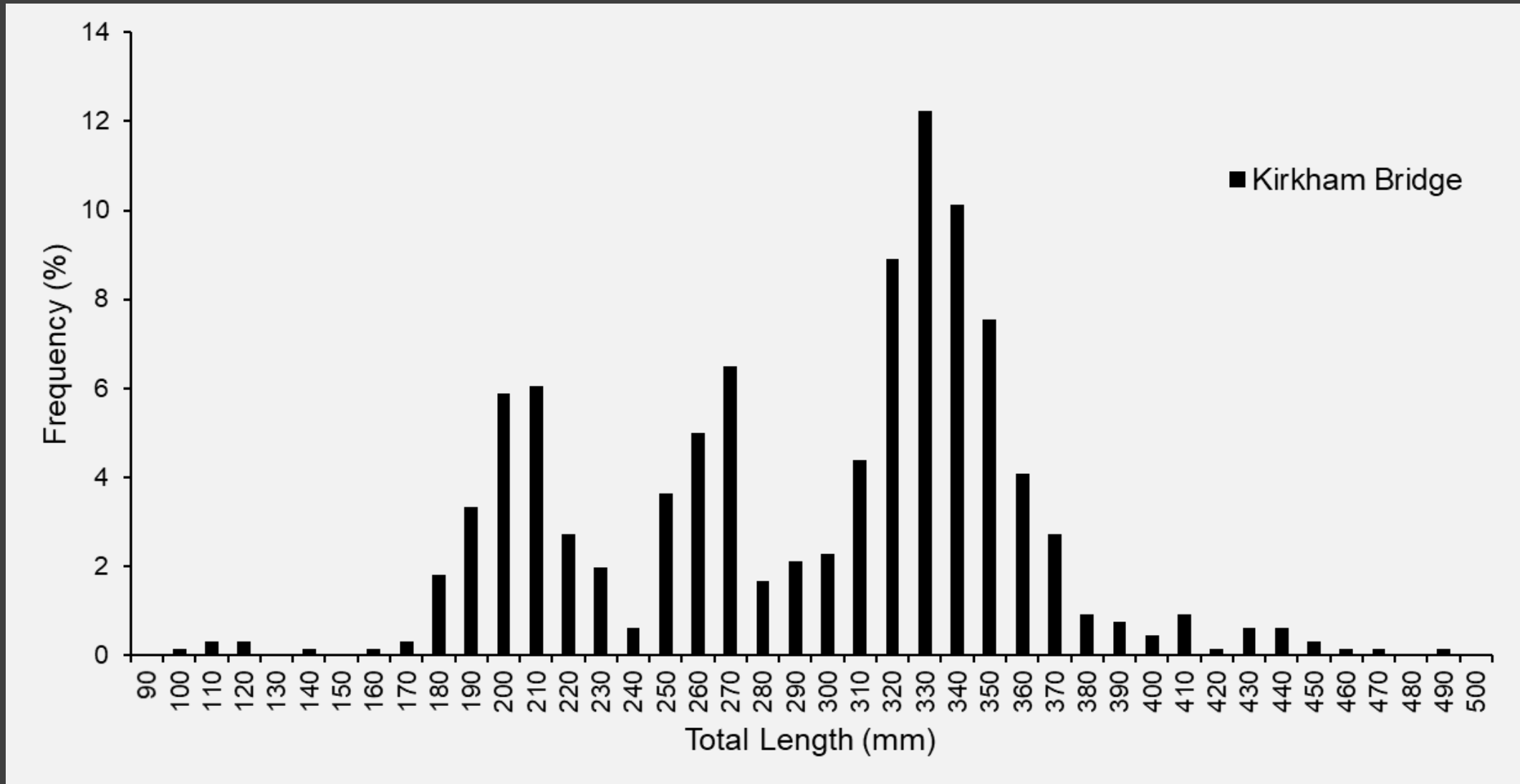


Fall River

- Kirkham Bridge



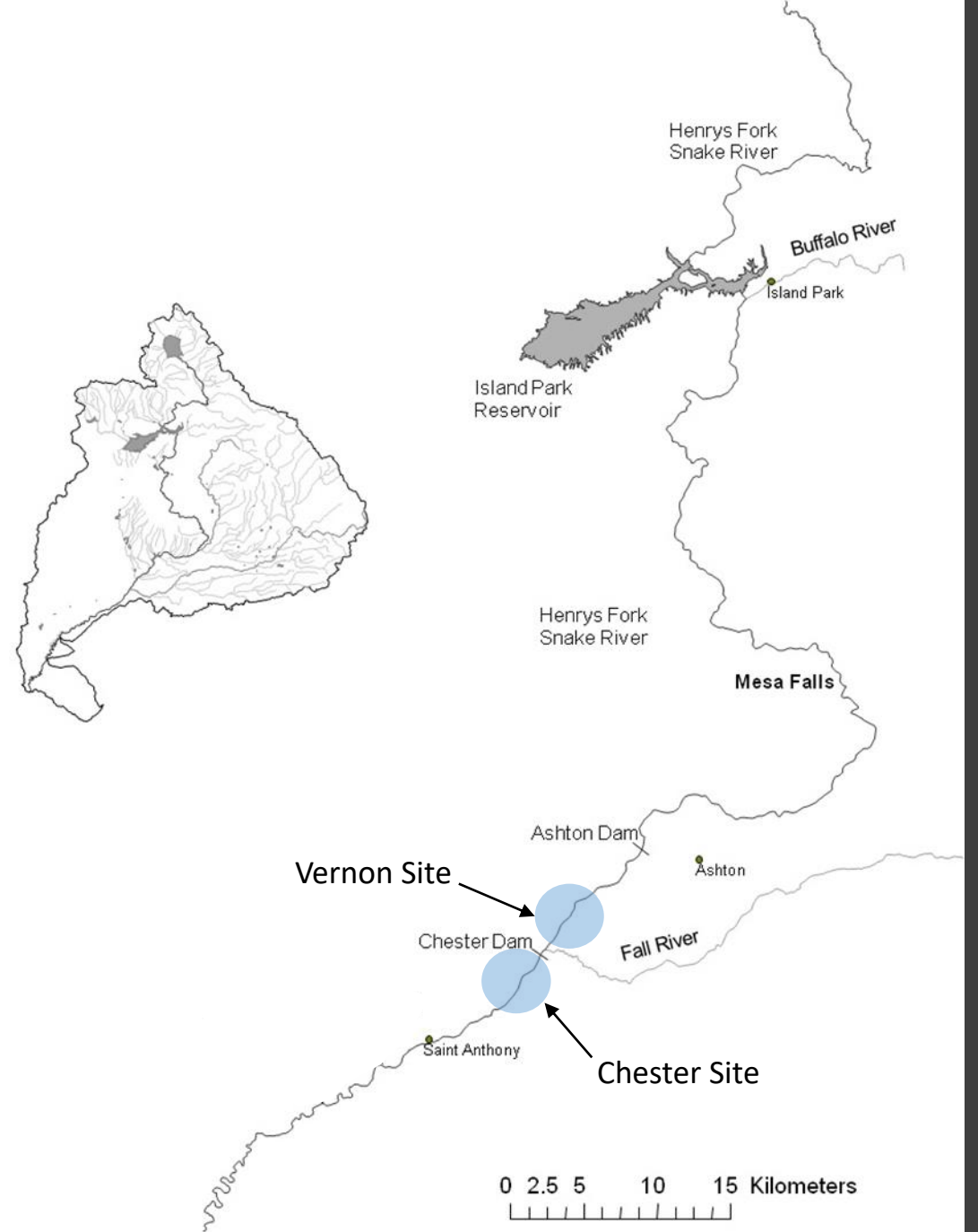
Length-frequency Fall River Rainbow Trout



Henrys Fork Snake River



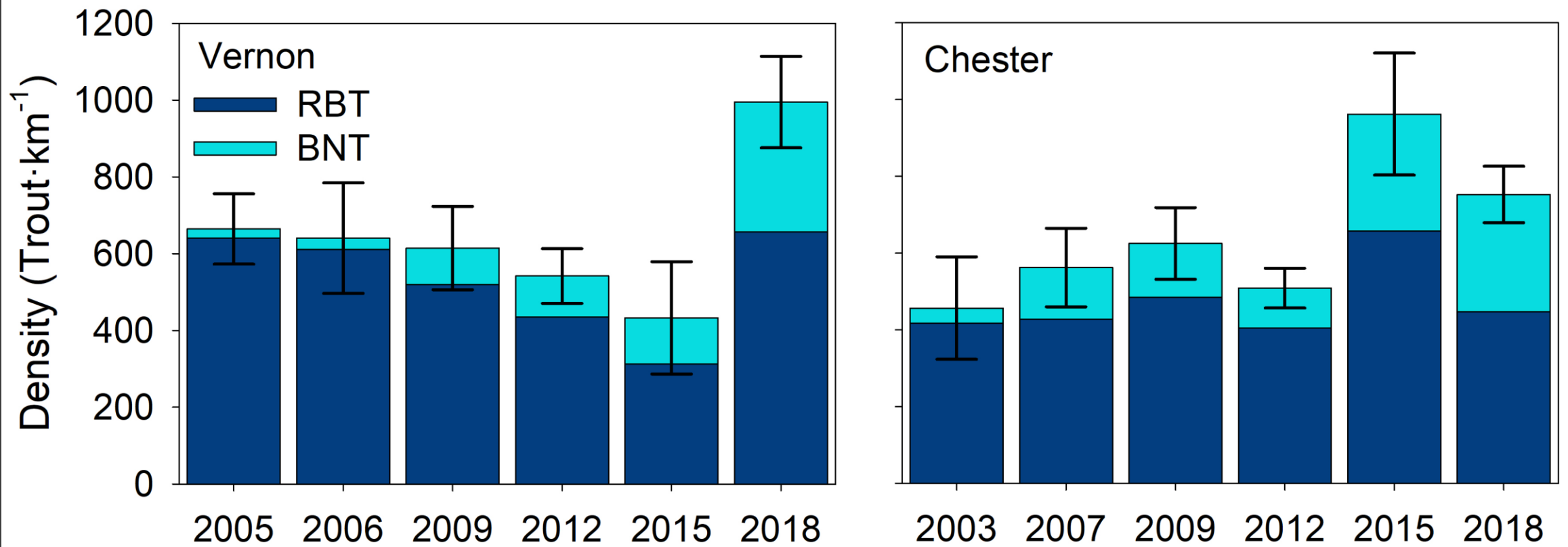
Vernon/Chester



Vernon/Chester



Vernon Chester Henrys Fork Snake River

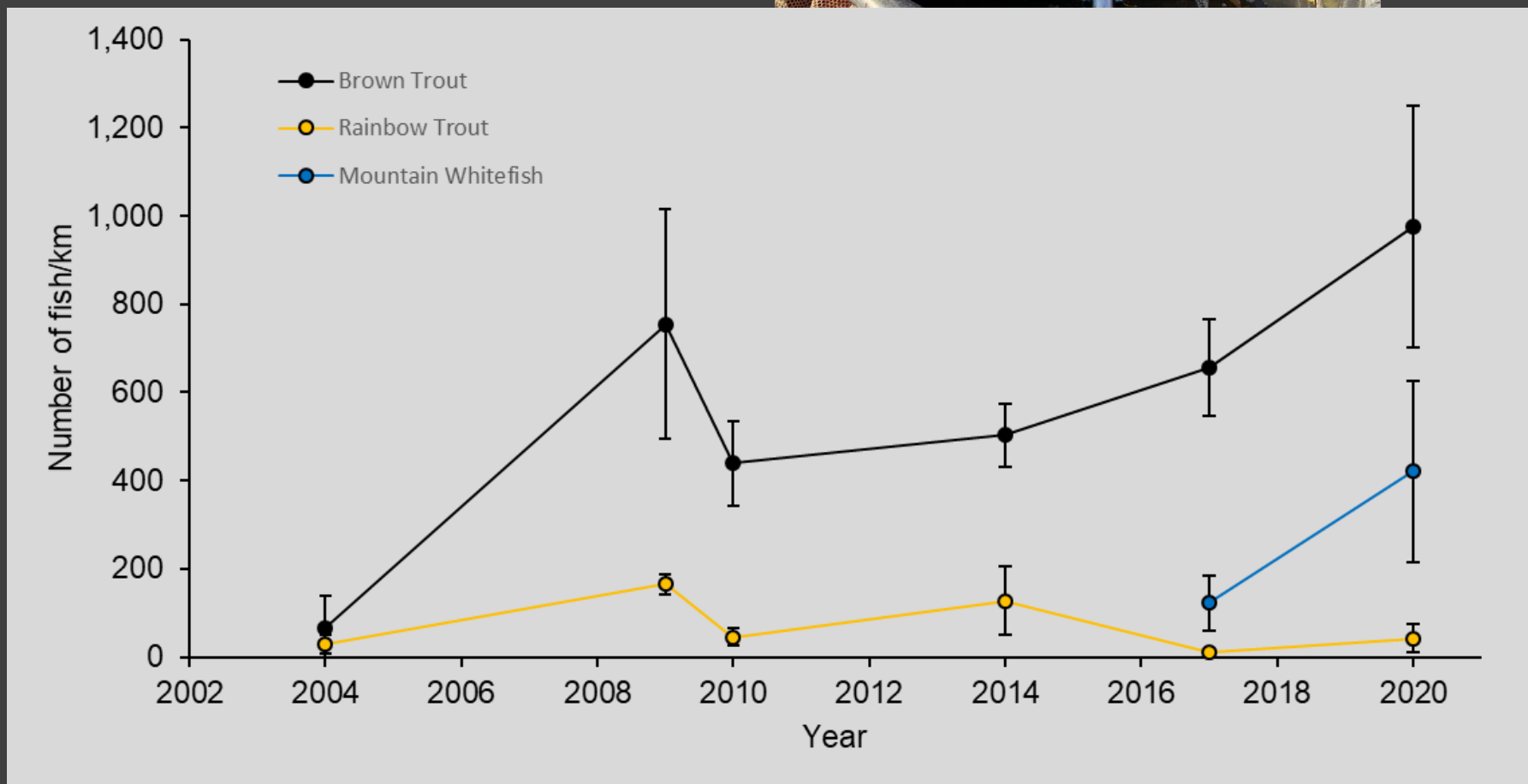


St. Anthony - Henrys Fork Snake River

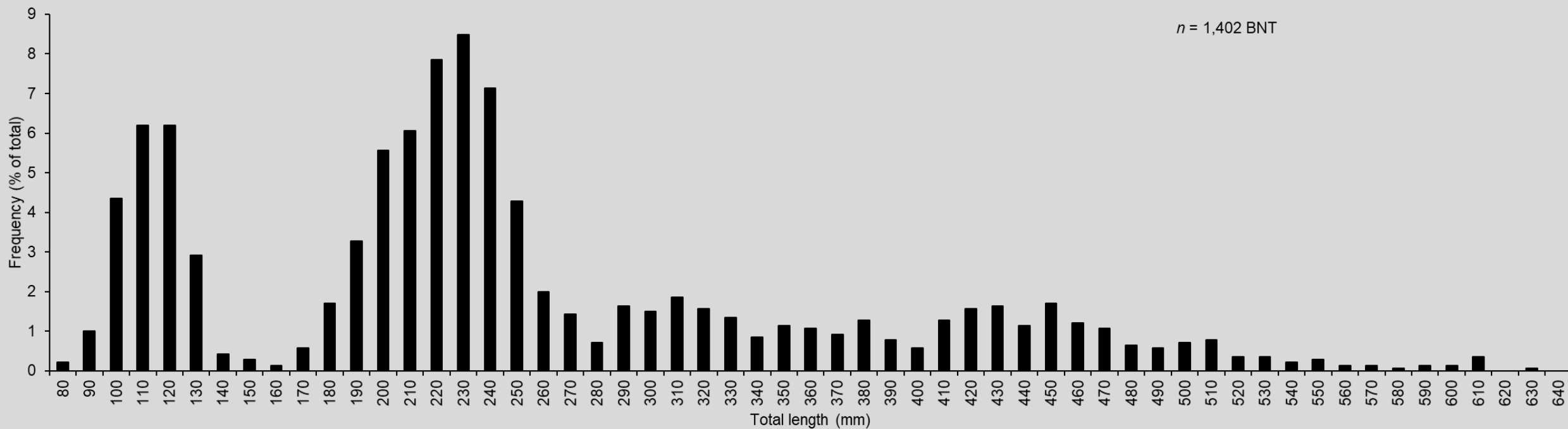




St. Anthony - Henrys Fork Snake River



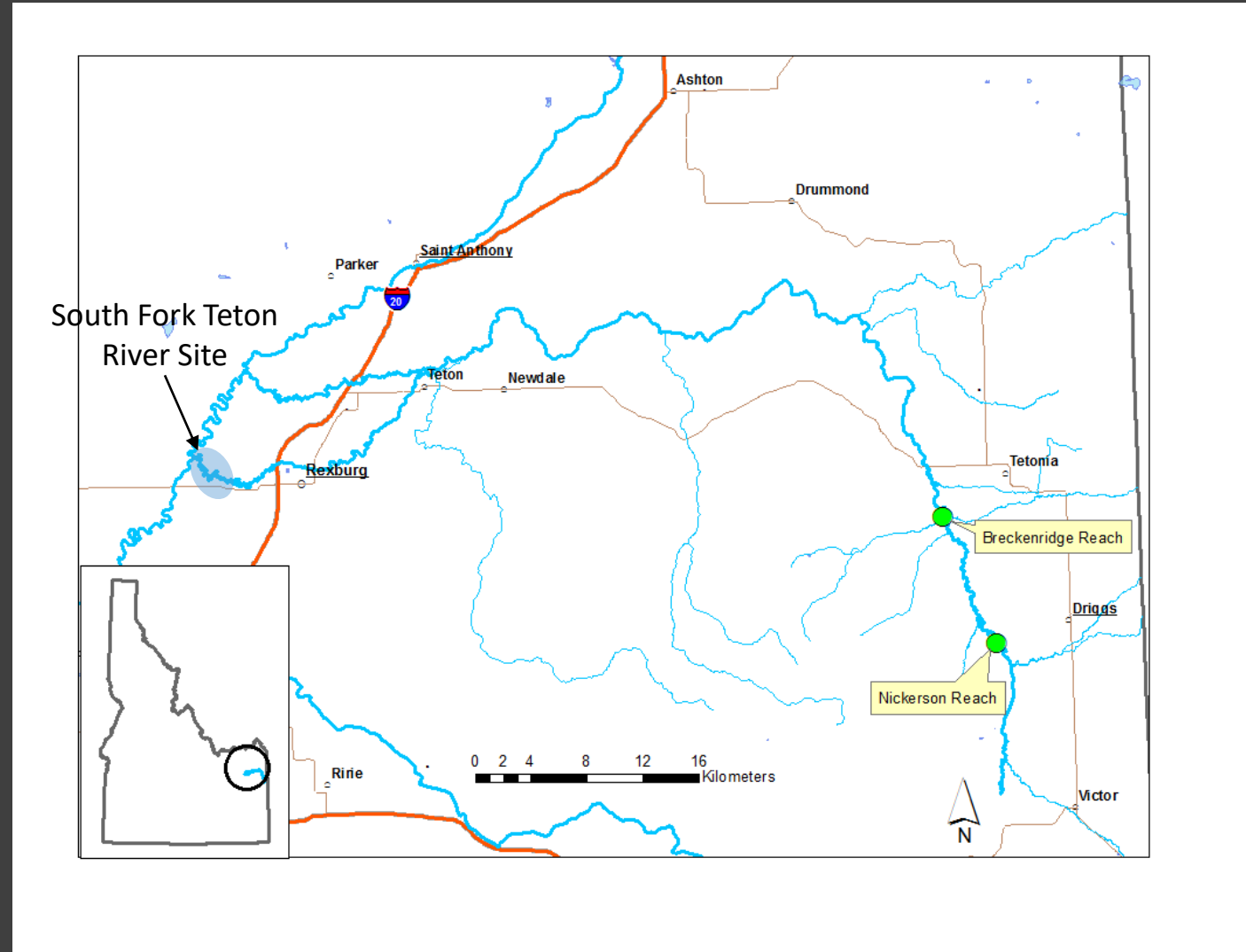
St. Anthony - Henrys Fork Snake River



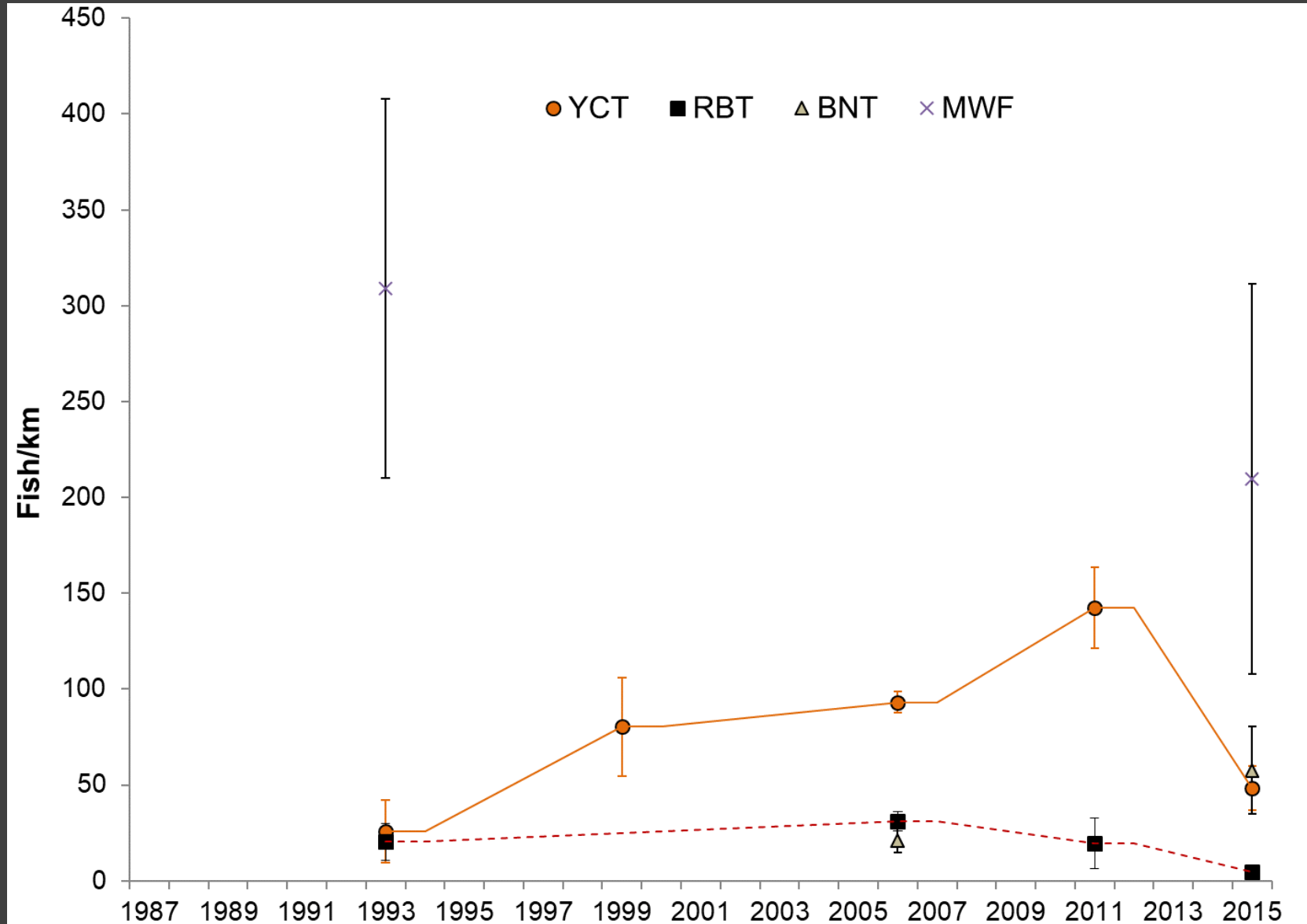
South Fork Teton River

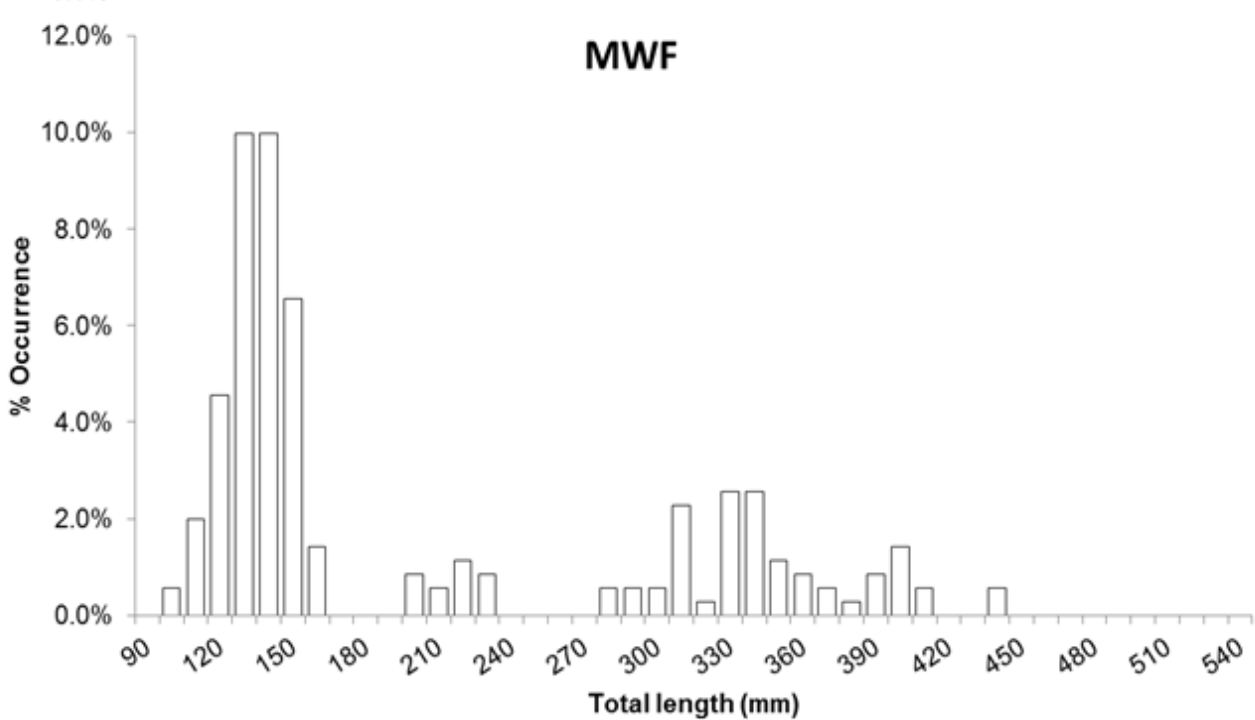
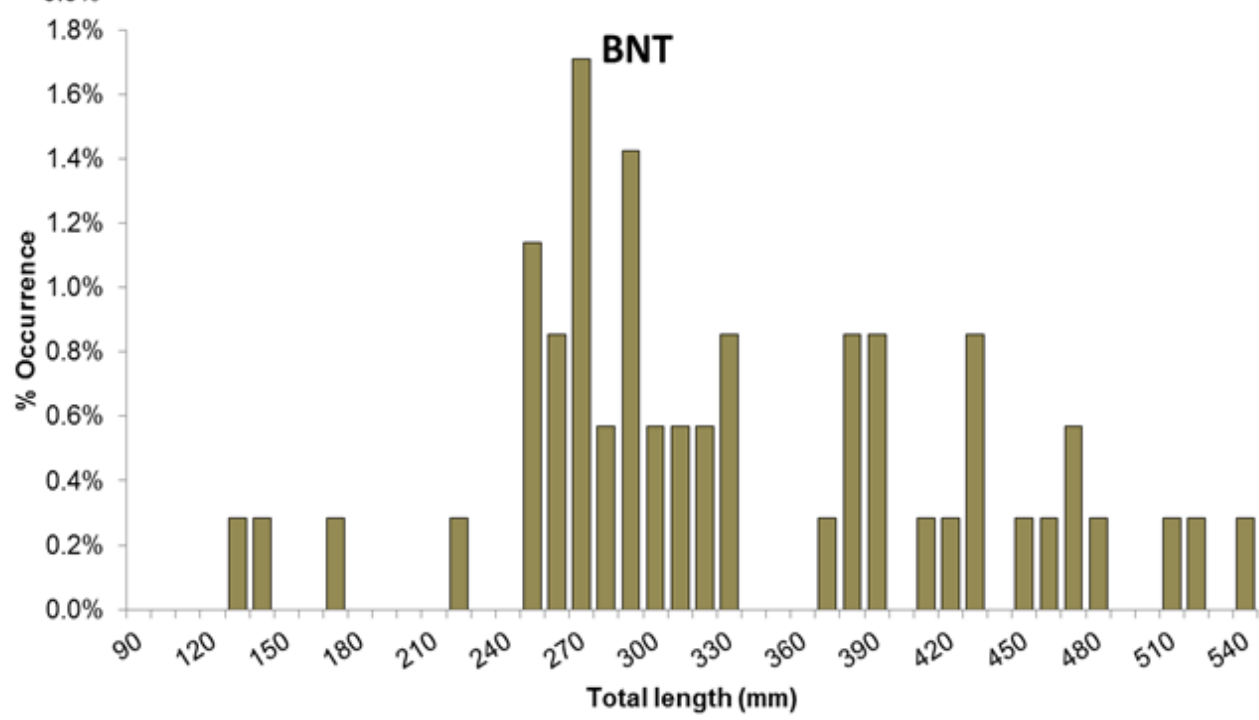
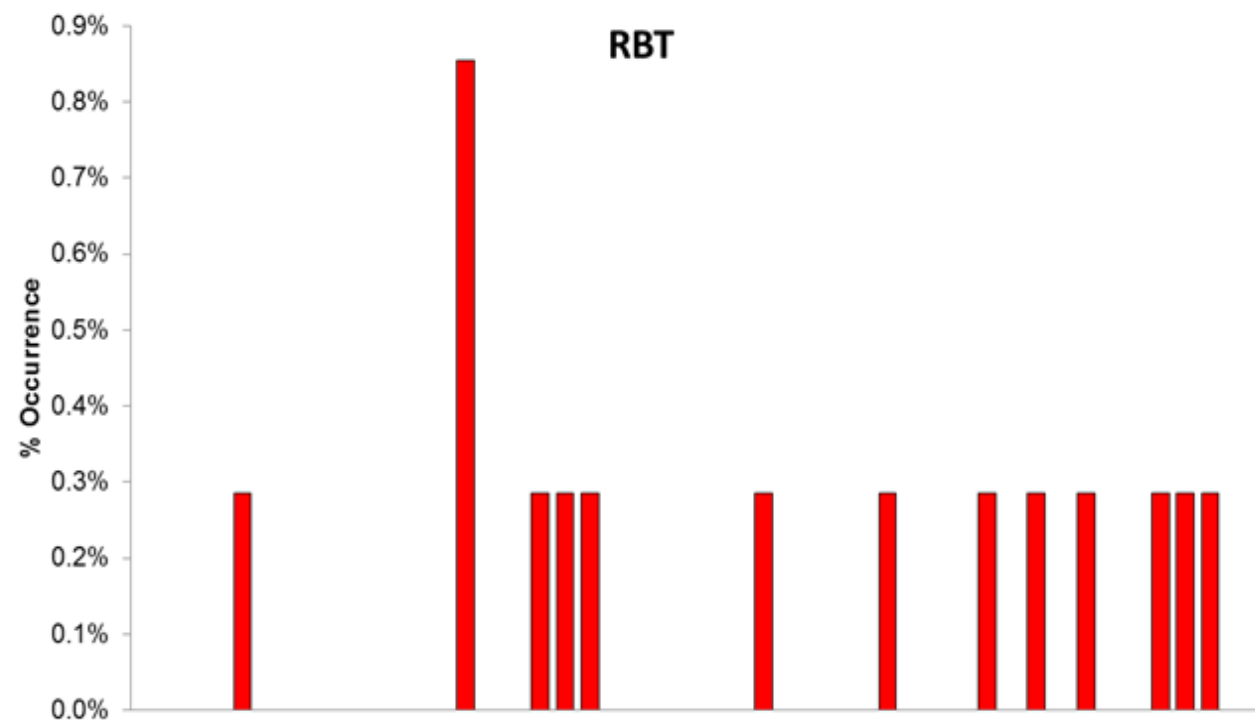
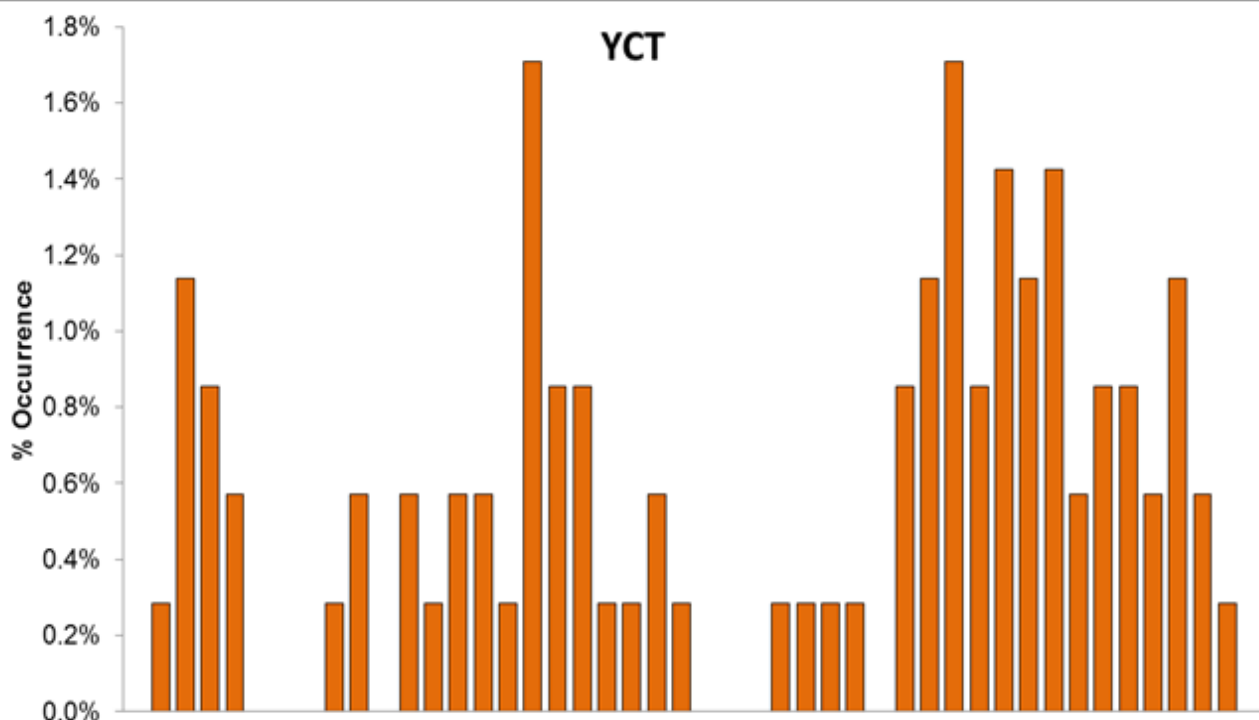


South Fork Teton River

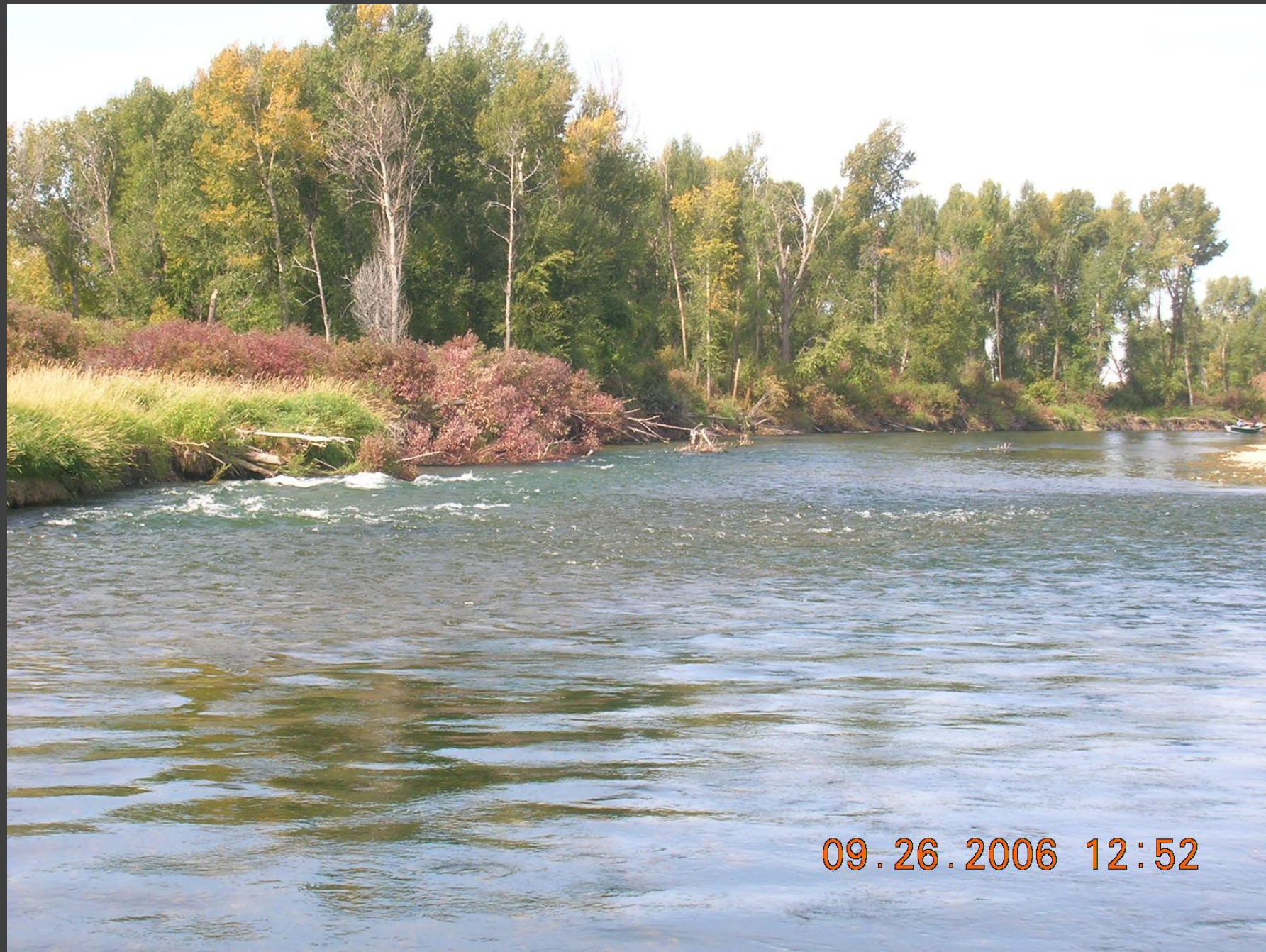


South Fork Teton River





South Fork Snake River

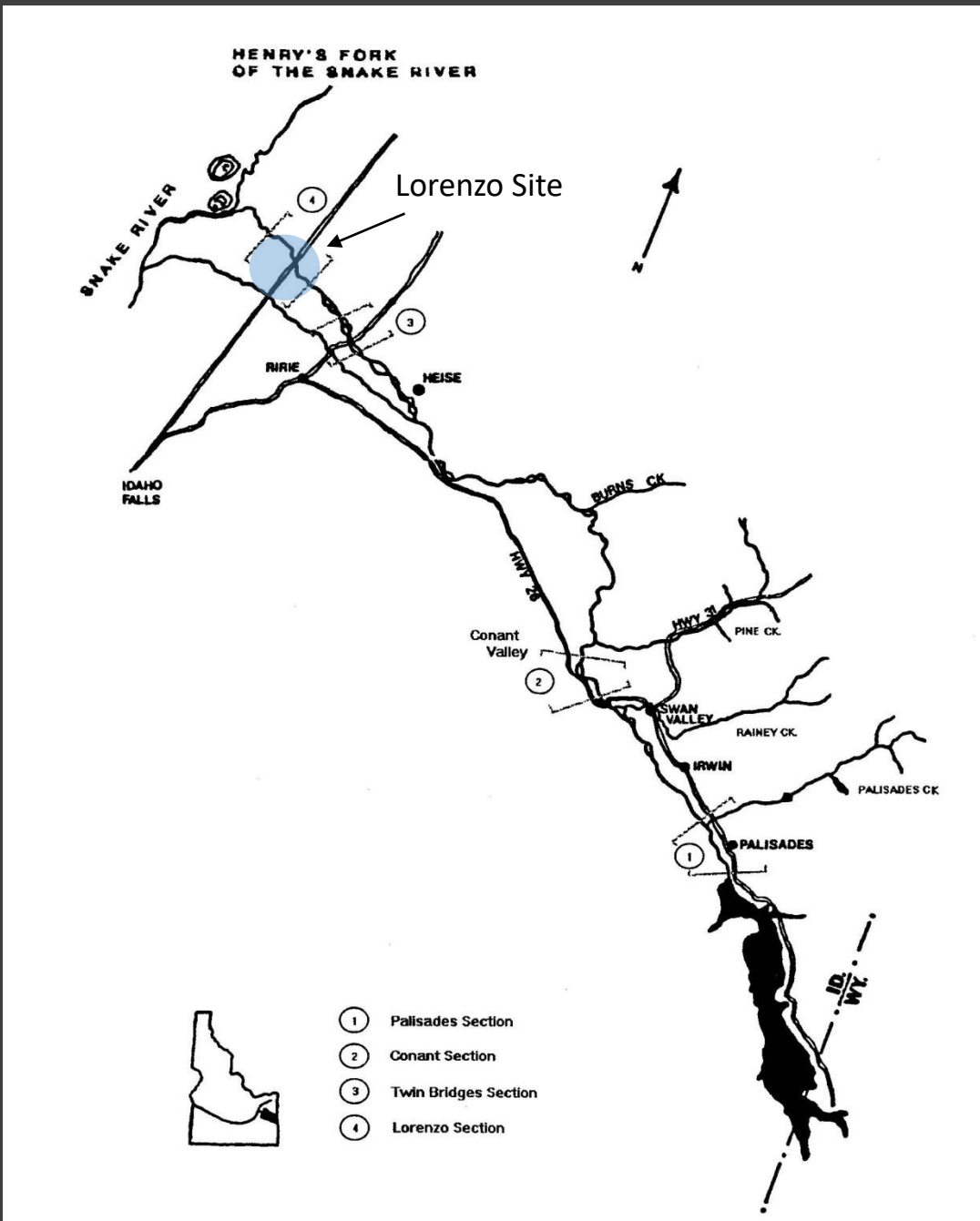


09.26.2006 12:52

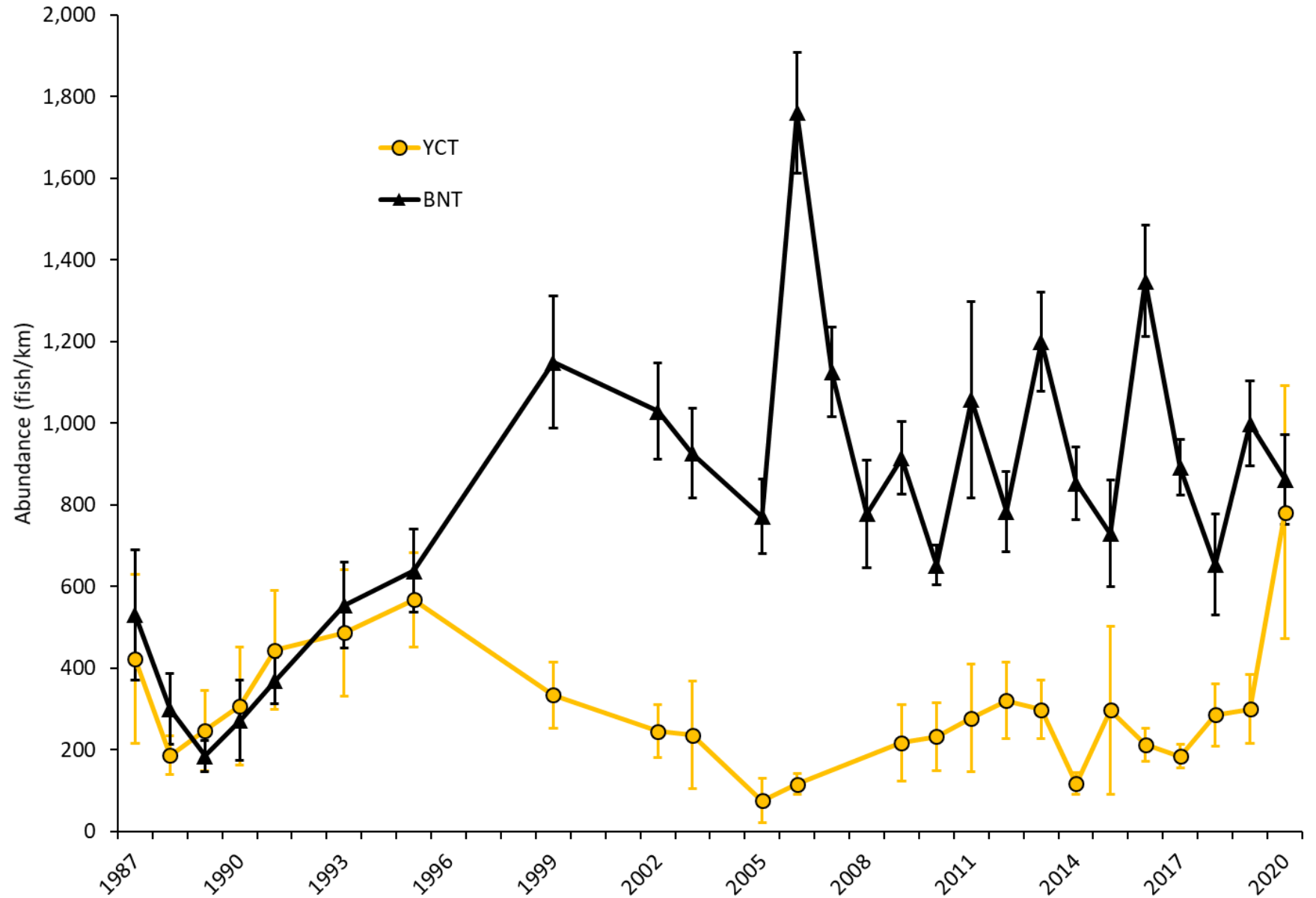
South Fork Snake River



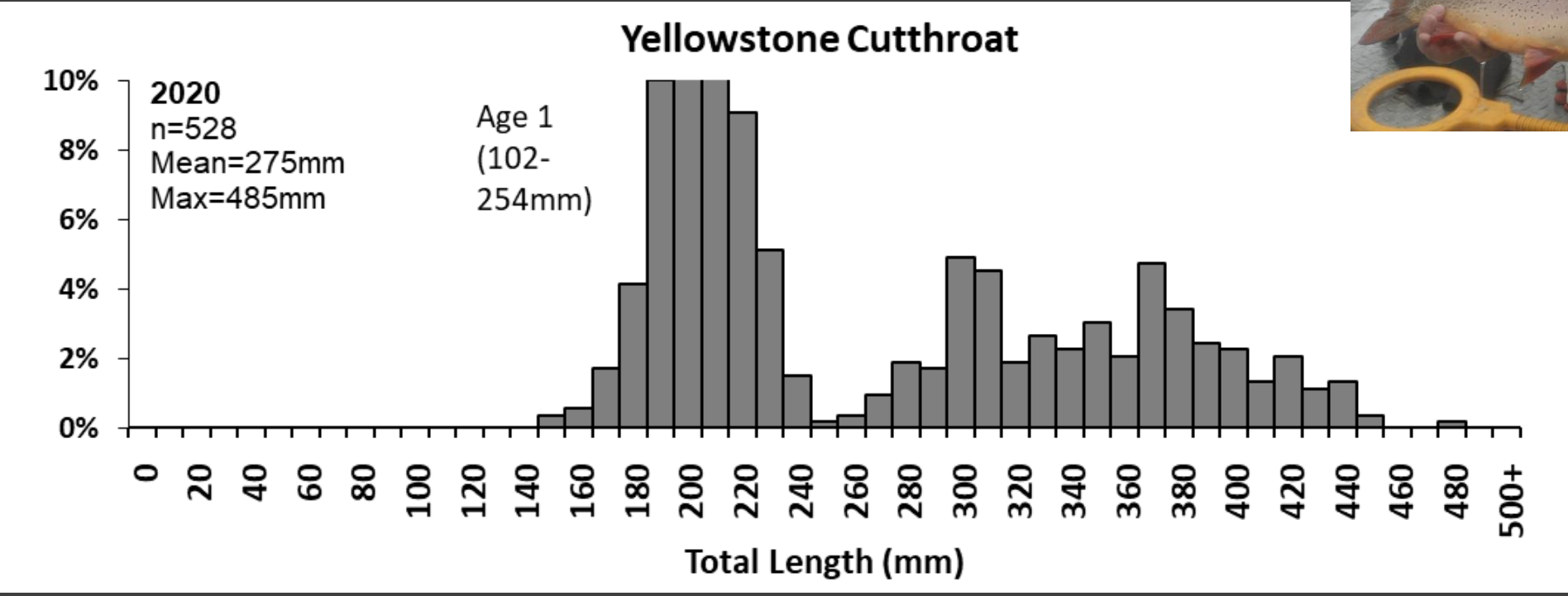
09.26.2006 12:52

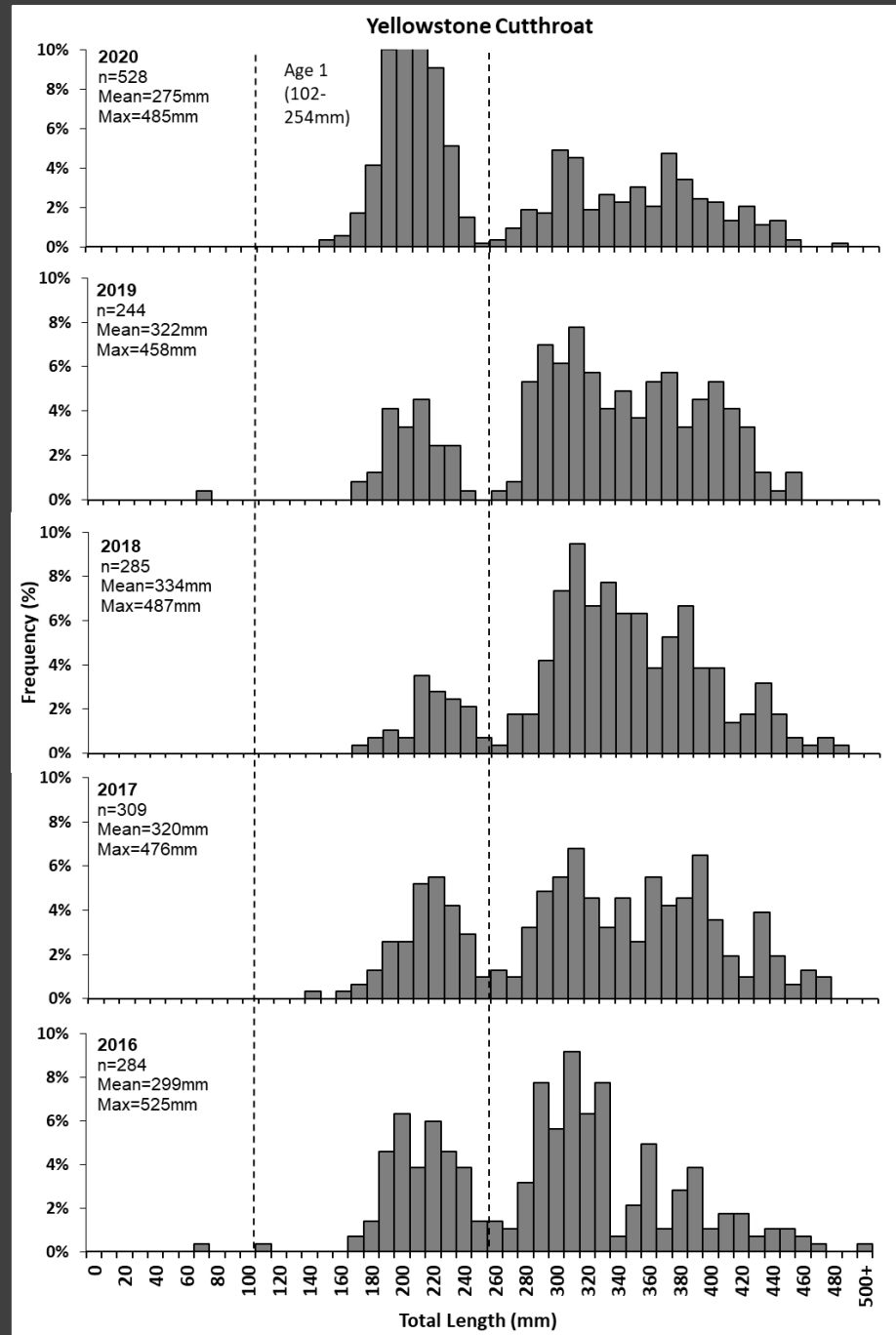


South Fork -Lorenzo



South Fork -Lorenzo

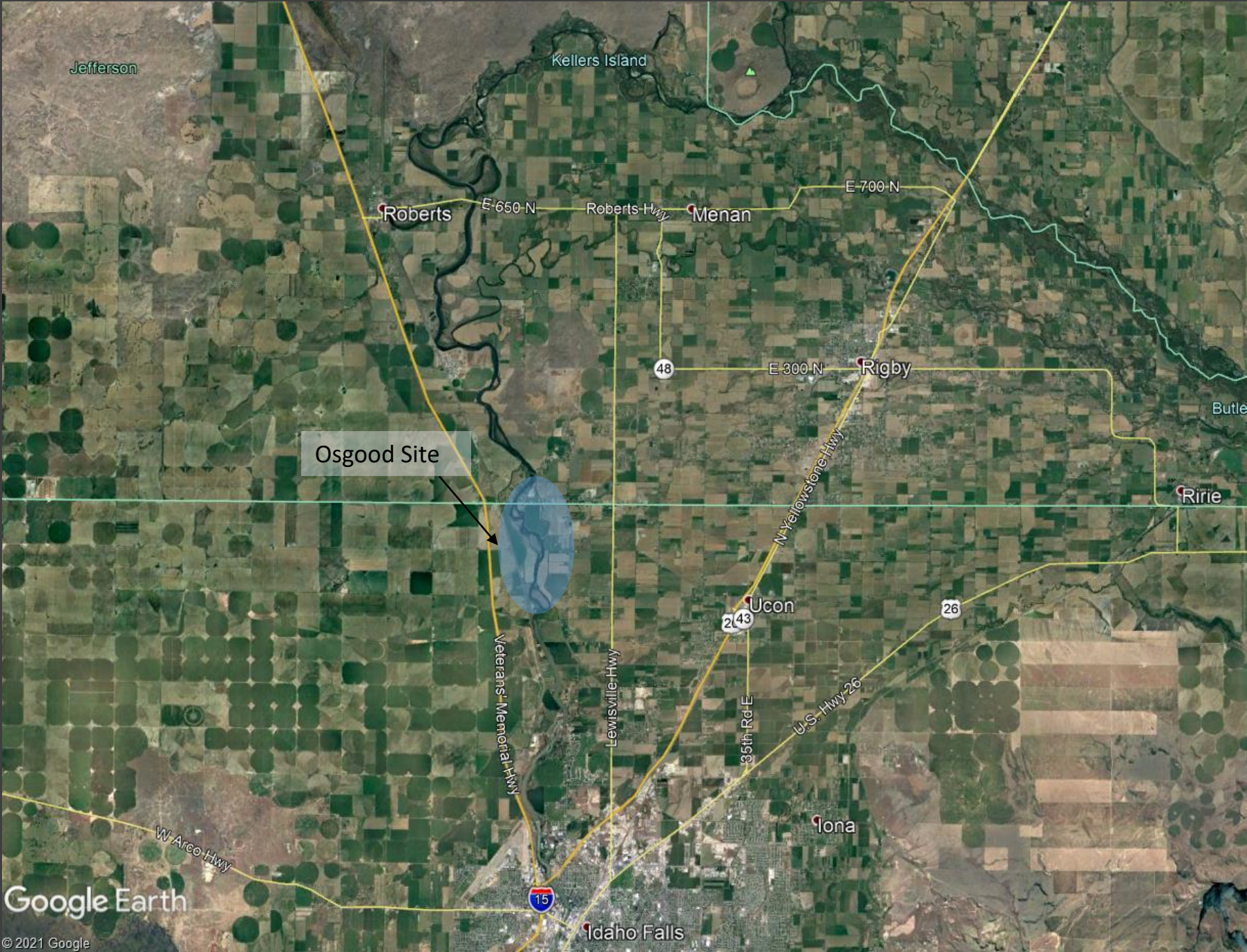




Snake River -Osgood

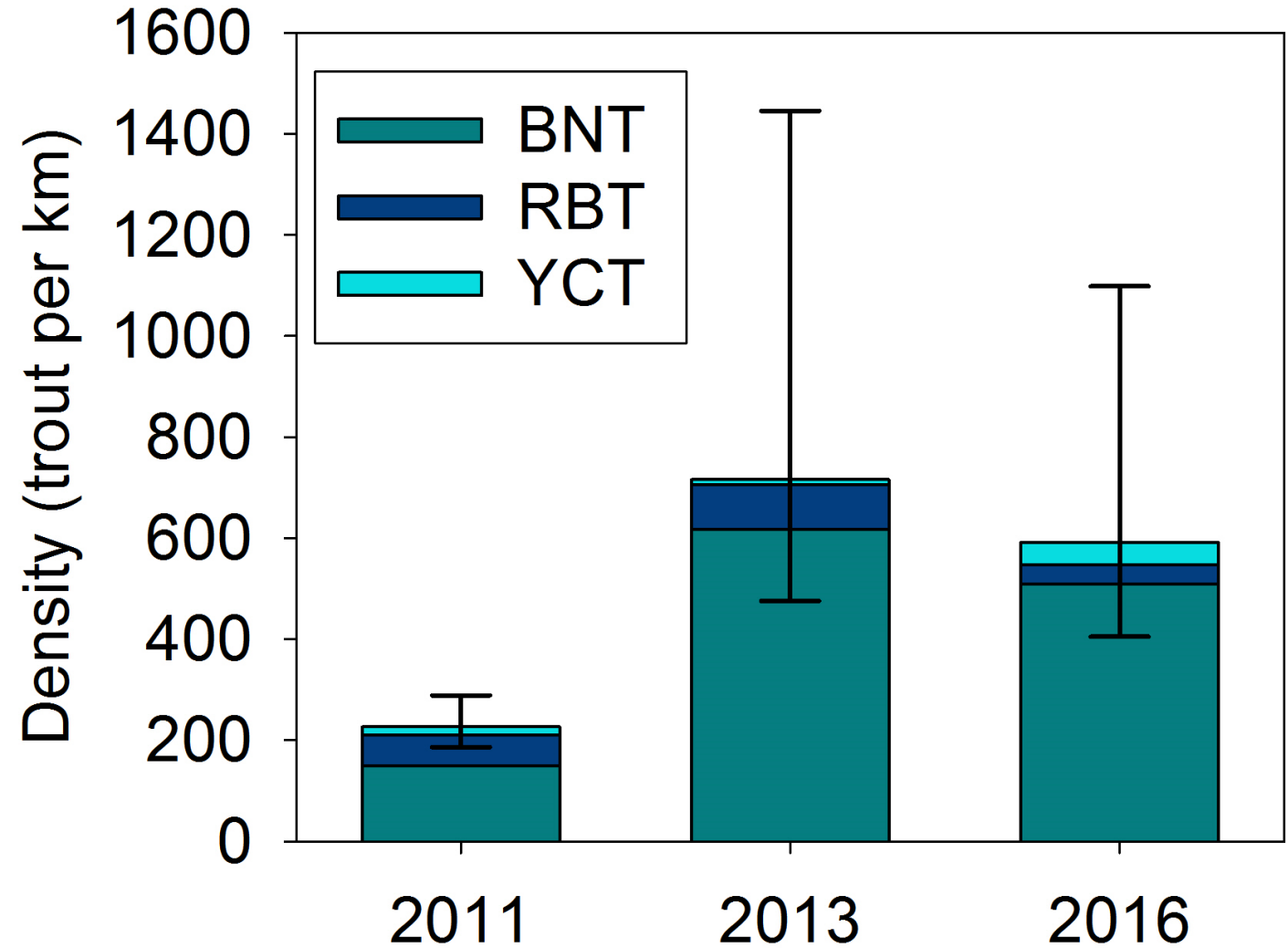


Snake River -Osgood



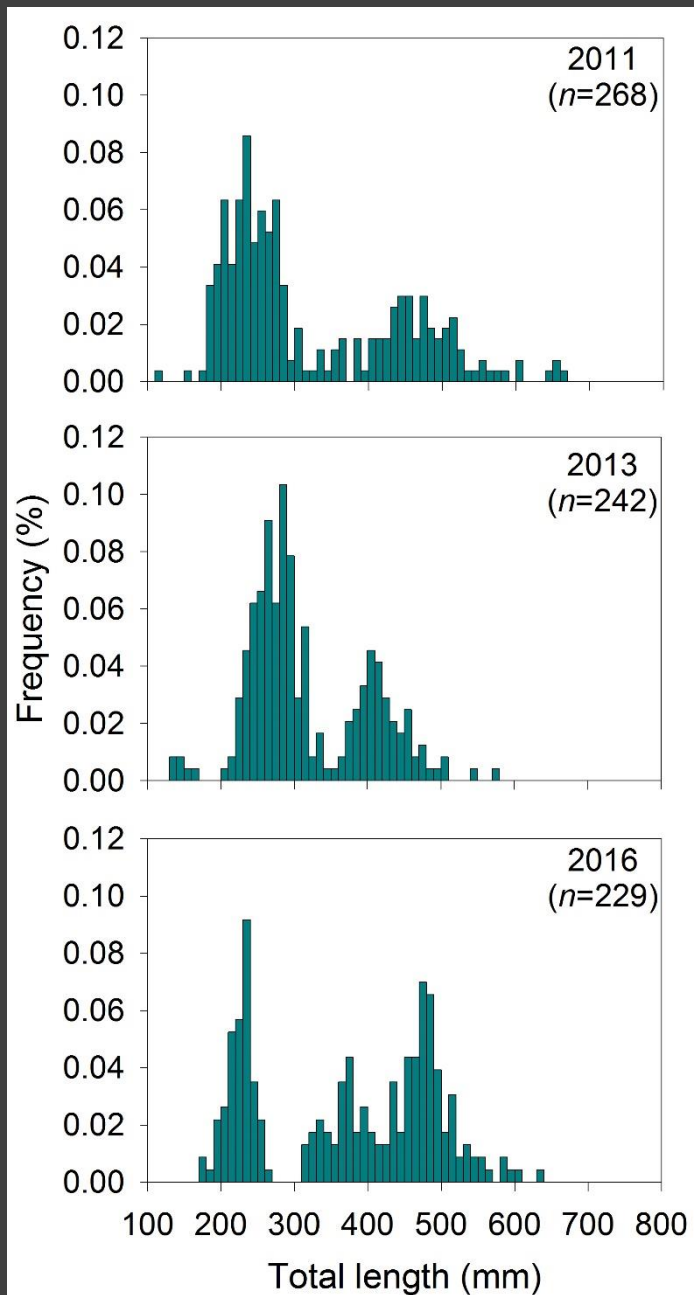


Snake River -Osgood

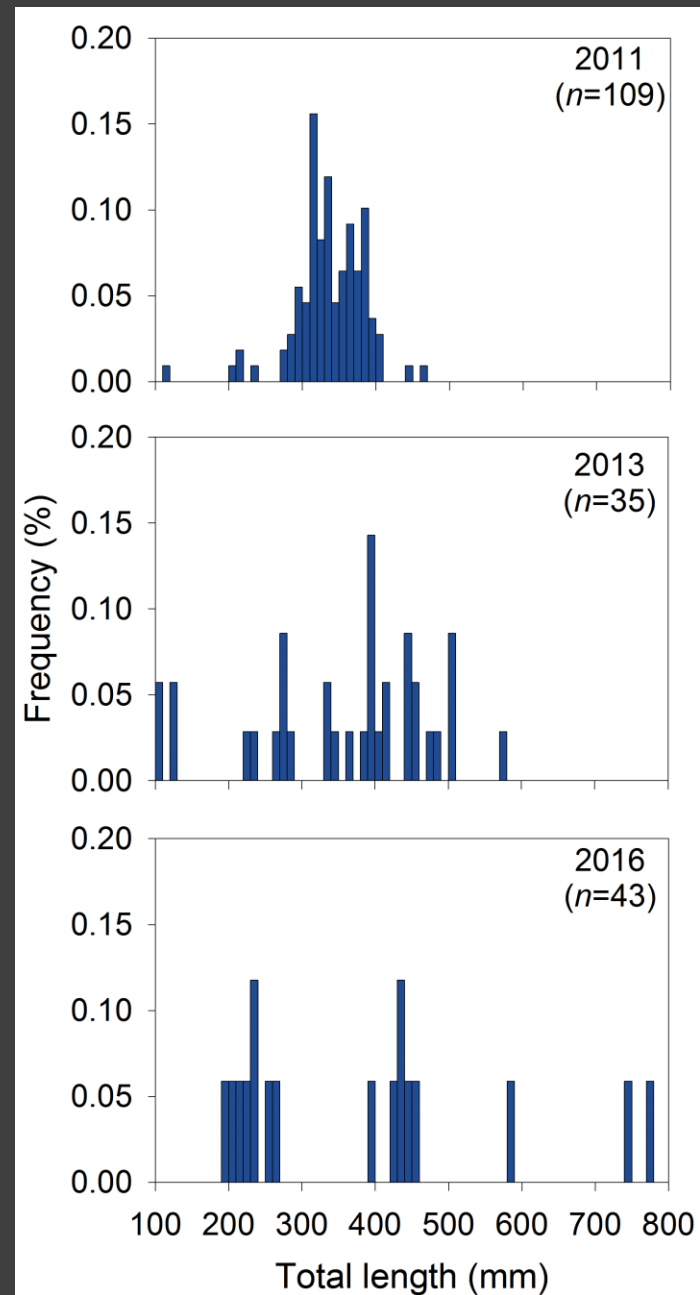


Snake River - Osgood

Brown Trout



Rainbow Trout





EVINRUDE
E-TEC

Woodridge

IDC571AG 17

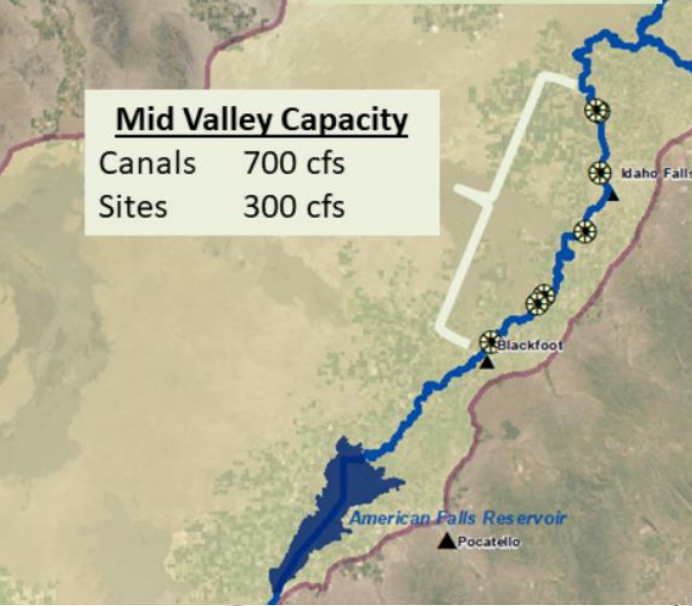
Resident Fisheries Continued, by Tom Bassista IDFG

- Quick time check
- Focus on fisheries above American Falls Reservoir (mid Valley)
- Briefly touch on resident fisheries below American Falls (Magic Valley)



IDFG Southeast Snake River boundary (Gem Dam to Minidoka NWR)

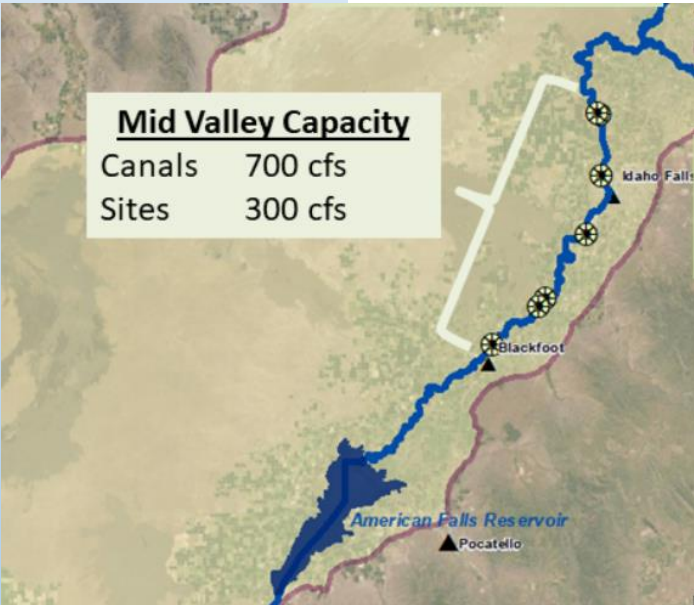
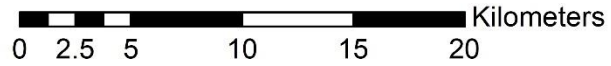
Mid Valley Capacity	
Canals	700 cfs
Sites	300 cfs



Carson Watkins
Regional Fisheries Manager



Mid-Valley IDFG Sample locations on Snake River



American Falls Reservoir

Pocatello
★

Chesterfield Reservoir

- **Sampled in 2020**
- **25 sites**
- **Sample every 3 years**



Number of trout capture in Snake River (Mid-Valley) 2020

Species	Number
Brown trout	350
Rainbow trout	200
Rainbow X Cutthroat	8
Hatchery Rainbow trout	80
Cutthroat trout	40



“Trout catch rates are comparable to many other rivers and it supports a decent fishery.”

Critical Flow Periods:

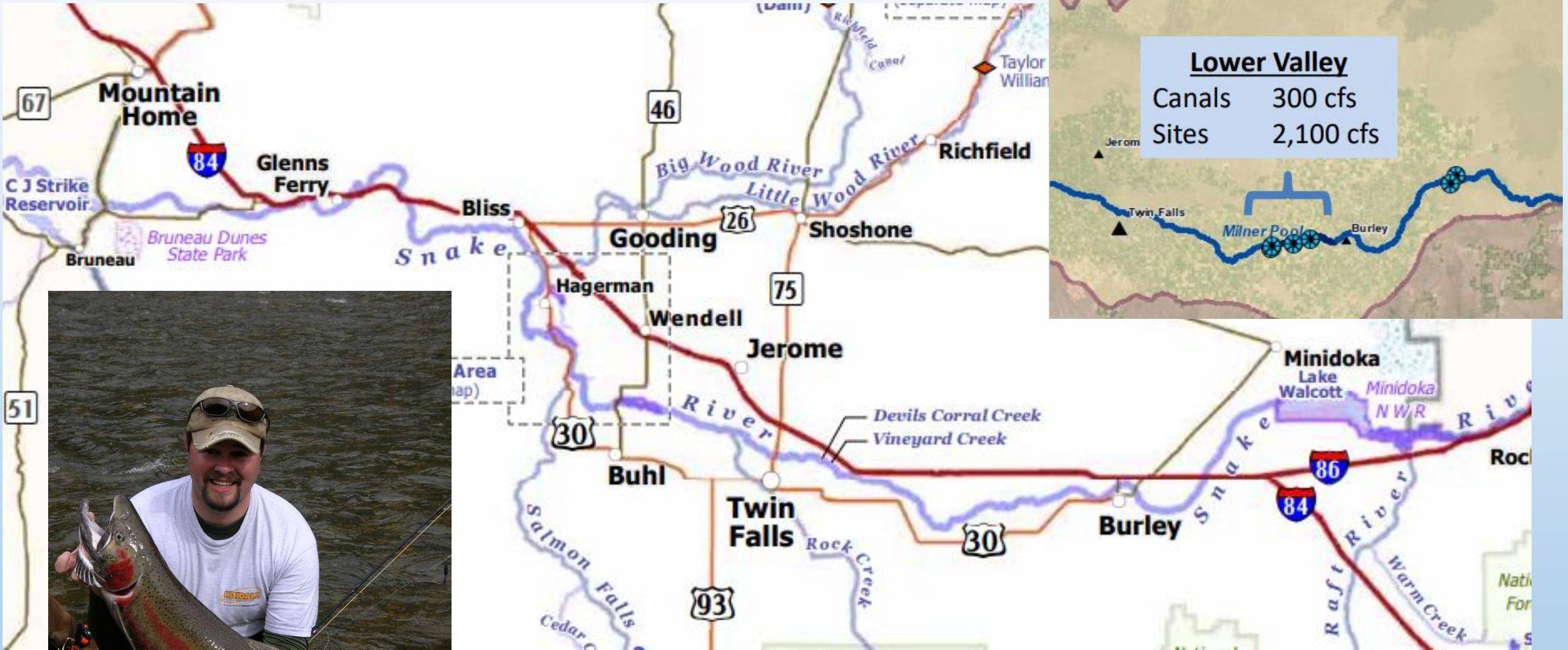
Winter (for overwinter juvenile trout habitat)

Spring (supporting spawning-Yellowstone Cutthroat Trout)

Building a data set for future analysis



IDFG Magic Valley Snake River boundary (Minidoka to CJ)



Mike Peterson
Regional Fisheries Manager



Magic Valley Resident Fisheries (IDFG sampling)

- Periodic Sampling done in Milner Reservoir and Lake Walcott
 - Milner-Smallmouth Bass size structure
 - Walcott Rainbow Trout exploitation and angler use
- Milner-good Smallmouth & Channel Catfish stocked
- Walcott-popular Smallmouth and Rainbow Trout fisheries
- Lower reservoir winter levels impact fisheries
- Canal entrainment largely unknown



© Joseph R. Tomelleri.

Opportunities related to MAR:

- Increase water levels in Murtaugh and Wilson Lakes?
- Increase spring discharge-good for Snake River fishery and invertebrates
- Note: Added an additional Regional Fisheries Biologist



Discussion, Next Steps and Adjourn

- Time Check
- Flows at Milner-future discussion
- Closer look at Resident Fisheries Resources in Lower Valley-where can recharge help?
- Other topics of interest for future meetings?

